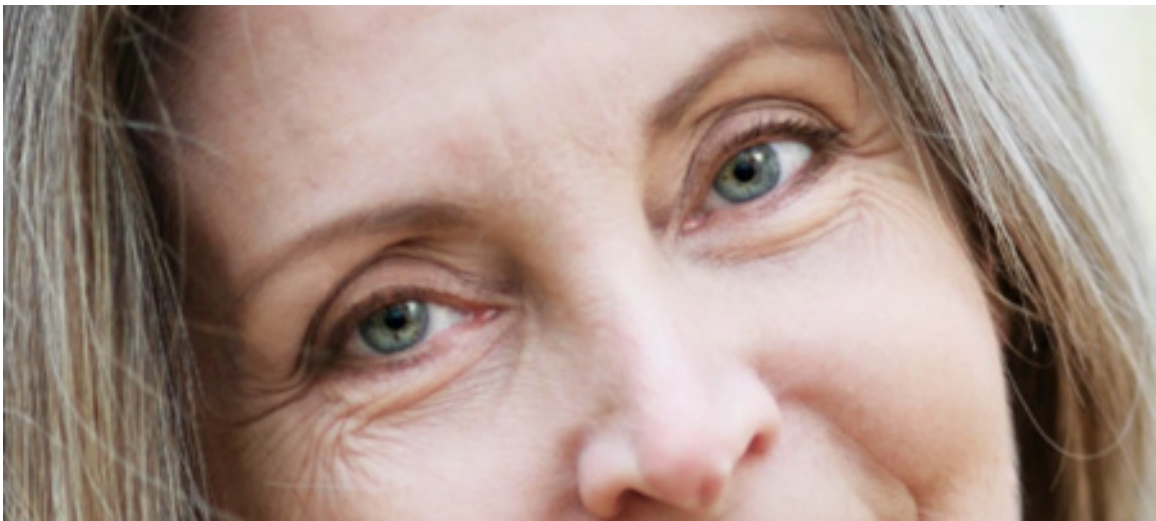


PHOTO Elements TECHNIQUES

Brighten the Eyes

Lesa Snider



A quick and easy technique to brighten the eyes in your portraits.

Photoshop Elements 14 was used in this video.

1. Open the image you want to use in **Expert** mode, **File>Open**.
2. Click on the **Create new fill or adjustment layer icon** and choose **levels**.
3. Change the **Blend Mode** of the levels adjustment layer to **Screen**.
4. Press **Ctrl-I** (Mac: **Command-I**) to invert the layer mask (change it to black).
5. Select the **Brush tool (B)** and in the **Tool Options bar** select a soft-edge brush from the **Brush preset picker**.
6. Set your foreground color chip to white and size your brush using the left and right bracket keys ([,]).
7. Adjust the **Opacity** as needed.